



kanha life science formerly known as KRISHNA CHEMICALS



Plot No 279/1/C, Phase II, GIDC, Opp Vatva Railway Station, Vatva, Ahmedabad-382445  
Mail : info@kanhalifescience.com, web: www.kanhalifescience.com M.No 9879575653, 7069090937

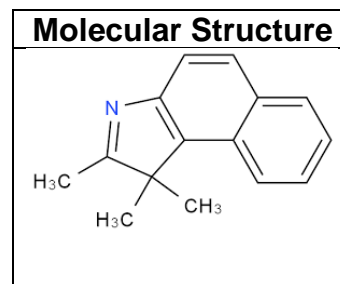
## CERTIFICATE OF ANALYSIS

S.O.P. NO.= SOP/QC/COA/43A

### ❖ PRODUCT: PETROLEUM JELLY

CAS Number	
Molecular Weight	209.28 gm/mol
Molecular Formula	C <sub>15</sub> H <sub>15</sub> N

Batch No.	XXX-XX-X-XX-X
Date Of Manufacturing	MONTH-XXXX
Date Of Retest	MONTH-XXXX



TEST PARAMETERS	STANDARD SPECIFICATION	OBSERVATION	RESULT
Description	A white, translucent, soft mass, not more than Slightly florescent by daylight even when melted Odorless when rubbed on the skin	To passes the test	Passes the test
Solubility	To Passes the test	Passes the test	Pass test
Acidity and alkalinity	To Passes the test	Passes the test	Pass test
Melting range	44 to 60°C	45°C	Complied

Every container of **A white Petroleum jelly** Concentrates is backed by our Quality Assurance System. In the event of any complaint, please return this card with details of your complaint. This will enable us to investigate its cause and server you better.

**PRODUCT LIABILITY CLAUSE:** The information on our products and recommendations on their use are based on our present knowledge and experience. They are given in good faith solely for the consideration of the users. As many factors affect the use of our products and since the conditions of use are beyond our control, all recommendations or suggestions are presented **without guarantee or responsibility** on our part. Users are advised to carry out their own tests and experiments to establish suitability of our products. We do not accept any liability for loss or damage, however arising which may directly or indirectly result from the use of our products. All such risk is assumed by the user. Furthermore, it is the responsibility of the users of our products to ensure that any proprietary rights, existing laws and legislation are observed.

ANALYSED BY

Mr. Tejas Gondaliya

APPROVED BY

Mr. Mehul Shah

**Warranty.** This information herein is offered as a guide and is believed to be accurate and reliable as of the date of the printing. The values given are not to be considered as a warranty and they are subject to change without prior notice. For additional information regarding our products or for information concerning current specifications, please contact our Technical Service.

**KANHA LIFE SCIENCE LLP** Formerly Known *Krishna chemicals* 279/1/C, GIDC Phase-II, Opp. Vatva Railway Station, Vatva, Ahmedabad.382445

Land Line No 079-29625653, Customer Care No 7069090937, Email: [info@kanhalifescience.com](mailto:info@kanhalifescience.com)

WEB:[www.kanhalifescience.com](http://www.kanhalifescience.com)